

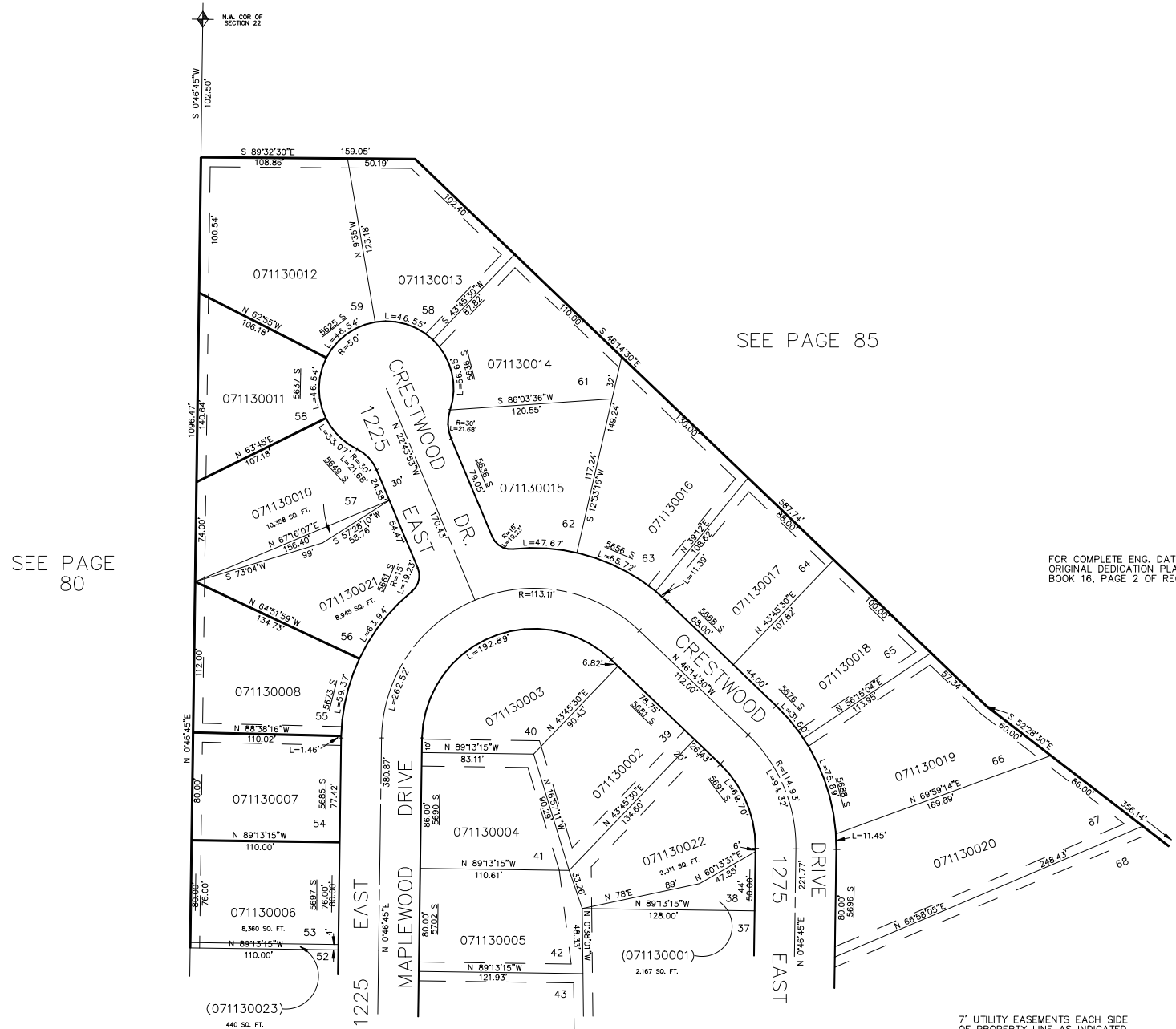
PART OF N.W. 1/4 OF SECTION 22, T.5N., R.1W., S.L.B. & M.
MAIN POINT SOUTH SUBDIVISION
 LOTS 38 TO 42 & 53 TO 67

113

TAXING UNIT: 27

IN SOUTH OGDEN CITY

SCALE 1"=60'



SEE PAGE 85

FOR COMPLETE ENG. DATA SEE
 ORIGINAL DEDICATION PLAT IN
 BOOK 16, PAGE 2 OF RECORDS.

7' UTILITY EASEMENTS EACH SIDE
 OF PROPERTY LINE AS INDICATED
 BY DASHED LINES. ALL EASEMENTS
 TO BE USED FOR IRRIG. WATER LINES,
 DRAINAGE, SANITARY & STORM SEWERS
 POWER LINES, TELEPHONE LINES &
 OTHER PUBLIC UTILITIES.

SEE PAGE 112